



Polly Ann Burlin

March 9, 1963 - January 17, 2015

Polly Ann Burlin, age 51, of North East, MD, suddenly went home to be with the Lord on Saturday, January 17, 2015.

She was a loving woman who was devoted to her daughters and grandchildren. Polly enjoyed going to the beach and relaxing with her family. In her spare time she liked to shop, cook, and tend to her flower garden.

Polly will be dearly missed by her daughters, Jody N. Burlin (Marcus) and Samantha K. Harris (Ronny); grandchildren, John and Keri; and her beloved dog, Buddy. She was preceded in death by her brothers, Michael and Mark Burlin.

A memorial service will be held at 5 PM on Tuesday, January 27, 2015 at Pleasant View Baptist Church, 150 Downin Lane, Port Deposit, MD 21904. In lieu of flowers, contributions may be made to Pleasant View Baptist Church. To express an online condolence, please visit www.strano-feeley.com

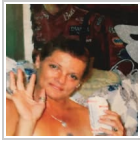
Previous Events

Service

JAN 27. 5:00 PM (ET)

Pleasant View Baptist Church
150 Downin Lane
Port Deposit, MD 21904

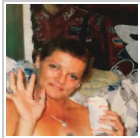
Tribute Wall



“ 1 file added to the album New Album Name



Kelly Luna - January 30, 2015 at 07:11 AM



“ 1 file added to the album New Album Name



Kelly Luna - January 29, 2015 at 10:40 PM



“ Keith Tollenger sent a virtual gift in memory of Polly Ann Burlin



Keith Tollenger - January 26, 2015 at 08:42 PM



“ We grew up next door to gather when we were teenagers we were boyfriend and girlfriend I will never forget her

Keith Tollenger - January 26, 2015 at 04:05 PM

MM

“ *Michelle Montiel lit a candle in memory of Polly Ann Burlin*



Michelle Montiel - January 24, 2015 at 04:49 PM

MM

“ *Jody & Samantha not sure if you remember who I am but your Mom and I were pretty close in our younger years. Your Mom had a big impact on my life. She introduced my now husband of 18yrs, to me. She taught me how to drive a stick when we were teenagers. She was and always will be a good friend! I am so VERY sorry of her leaving us here on earth but she is with the angels and will be forever in our hearts! Deepest Sympathies to BOTH of You. Michelle Montiel (Smythe)*

Michelle Montiel - January 24, 2015 at 01:31 PM

TS

“ *Samantha, I am sorry to hear about your loss. You are in my prayers.*

Taylor Sewell & Family

Taylor Sewell - January 22, 2015 at 03:29 PM